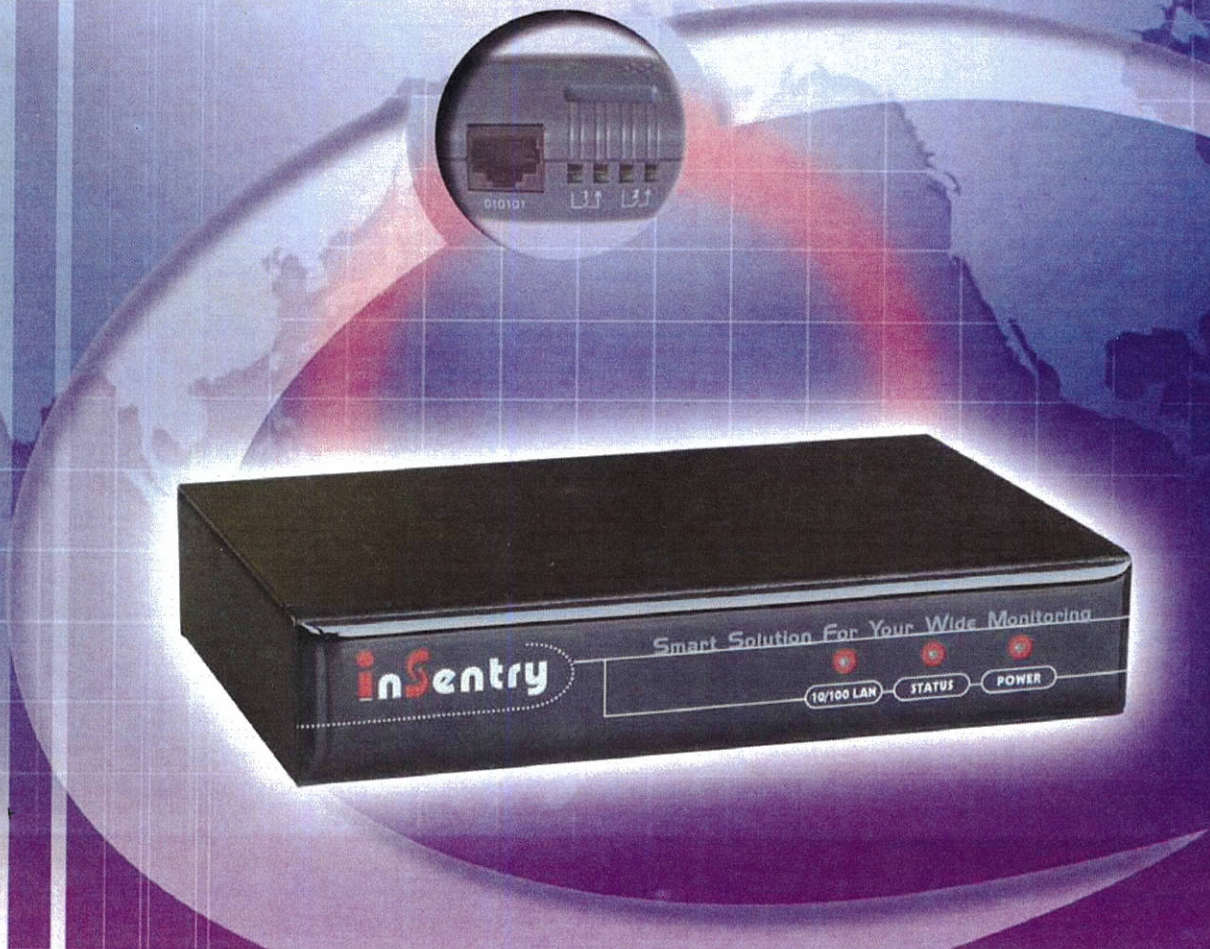


inSentry

*Smart Solution for
Your Wide Monitoring*

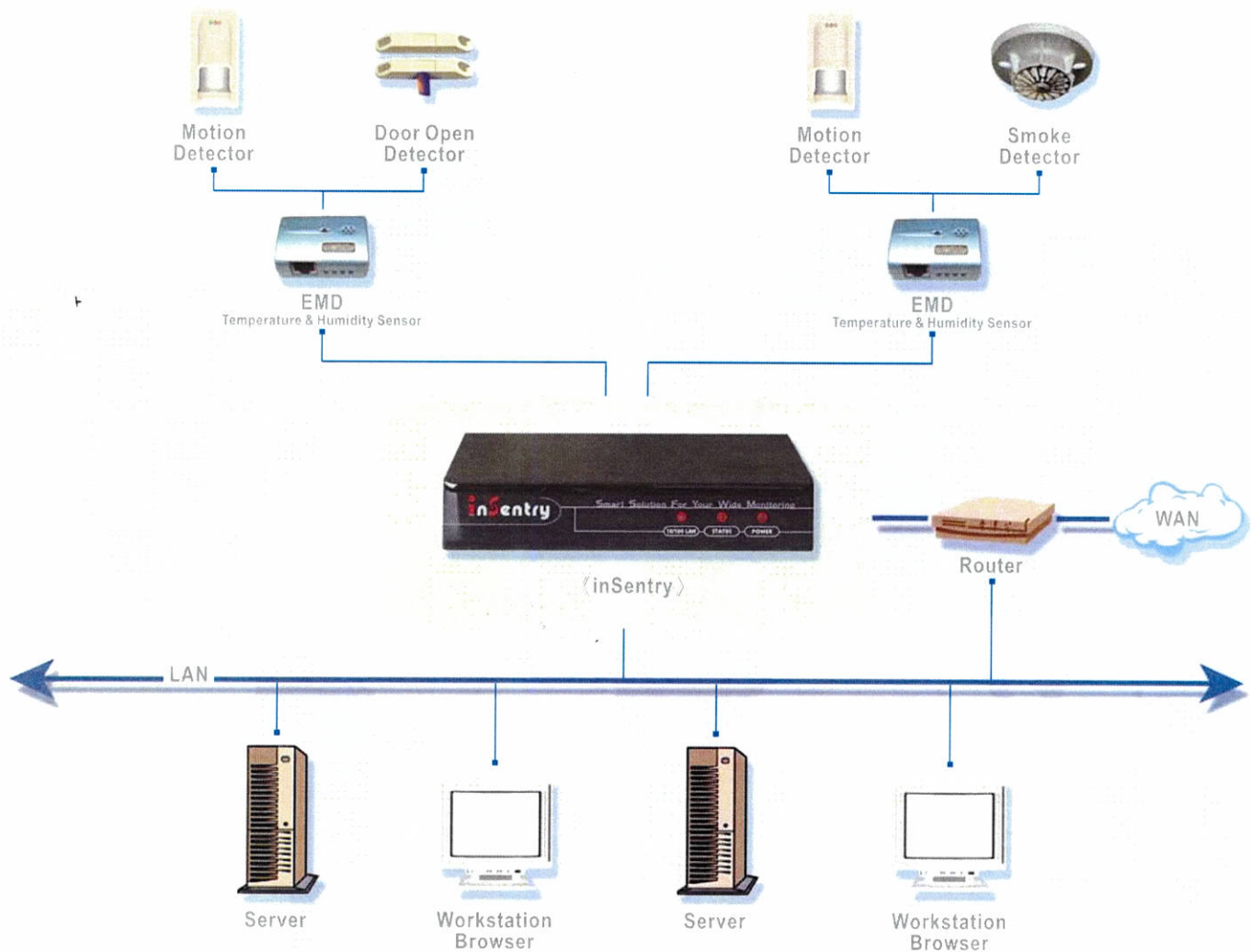


The inSentry is an IT environmental monitoring device that provides remote monitoring of temperature, humidity and other environmental conditions via standard Web Browsers or Network Management Systems.

- Real-time monitoring of environmental conditions
- Add user-provide contact devices effortlessly within minutes
- Automated events notification of out-of- scope conditions
- Regularly record and analyze environmental data

Advantages:

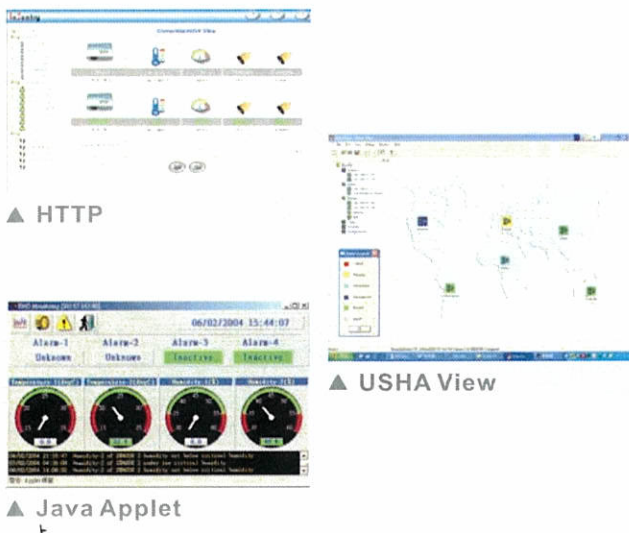
- Real-time temperature/humidity and other environmental conditions monitoring
- Monitors the status of four user-provide contact devices to protect your critical equipments
- Comprehensive environment conditions management and flexible configuration via Web Browser, NMS (Network Management System), Java Applet, Telnet, SNMP or Hyper Terminal
- Automatic events notification via E-mail and SNMP Trap
- Regularly records EMD parameters for statistical analysis and event diagnostics
- Automatically assigned IP via DHCP or BOOTP
- Auto-sense to works in the 10/100Mbps fast Ethernet network environment
- Configuration utility simplifies the firmware upgrade process
- Quick and easy installation (Hot-swappable)



Versatile Sensor Support

- **Standard:** inSentry is supplied with an EMD (Environmental Monitoring Device) as standard.
 - ※ **Temperature Monitoring:** Measures temperatures between 0°C and 80°C with an accuracy of $\pm 1^\circ\text{C}$
 - ※ **Humidity Monitoring:** Measures relative humidity between 10% and 90% RH with an accuracy of $\pm 3\%$
- **Extension:** Two additional sensor devices can be connected to the EMD and monitored via the inSentry.
 - ※ **Addition sensor devices include:**
 - * Motion detector
 - * Smoke detector
 - * Universal (any device with normally-open or closed)

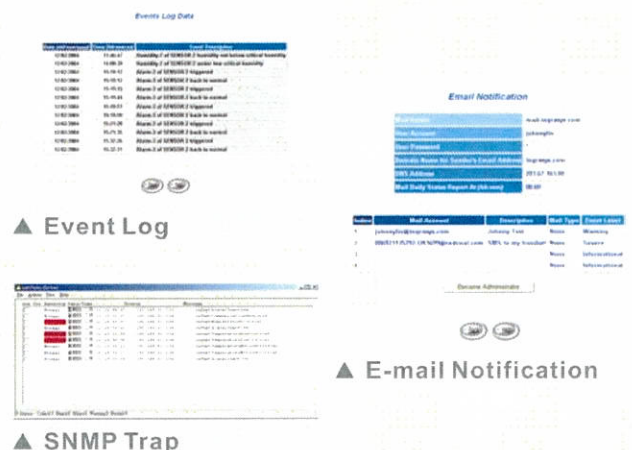
Remote Monitoring and Management of Environment



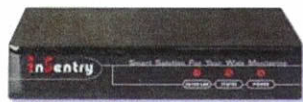
- **HTTP:** Support HTTP Protocol. Remote environment monitoring and management can be easily achieved through Web Browsers such as Microsoft Internet Explorer and Netscape.
- **SNMP:** Support SNMP protocol. Centralized monitoring and management the environment can be accomplished by a Network Management System such as HP Open View.
- **Java Applet:** Java Applet can be launched from within Web Browsers for real-time environment status monitoring with graphical data.
- **Telnet:** Provides alternative method for configuration of the inSentry, which includes automatic log-out function for additional security.
- **USHA View:** Designed for simultaneous environment services monitoring and management.

Proactive Environment Event Handling

- **Event Log:** Automatically records and displays environment events, warning and time stamps.
- **EMD Status Notification:**
 1. **SNMP:** notifies multiple hosts, previously assigned in an SNMP trap table, of environment status and warning messages.
 2. **Java applet:** notifies the Administrator of detective events with a pop-up dialog box.
- **E-mail Notification:** Daily routine information and detective events can be sent through E-mail.



Technical Specification:



■ inSentry Network Agent

Dimensions 5.24(W) x 3.46(D) x 1.06(H) in. / 133(W) x 88(D) x 27(H) mm
Weight approx. 200g

CPU	50MHz micro controller
RAM	512Kbyte x 16-bit
Flash ROM	512Kbyte x 16-bit
LAN Interface	Auto-sense 10/100Mbps Fast Ethernet
Serial Port	Two asynchronous serial ports for EMD and console communication
LED Display	Power, Status, LAN 10/100 Link
Miscellaneous	Real-Time-Clock, Reset button
Power Adapter	<ul style="list-style-type: none"> • Input: 100V ~ 240V 50Hz ~ 60Hz • Output: 12 volt unregulated
Power Consumption	3 Watts maximum
Network Protocol	HTTP, SNMP, DHCP, BOOTP, ARP, RARP, Telnet, SMTP, TFTP
MIB Supported	InSentry MIB
Firmware Upgrade	<ul style="list-style-type: none"> • Network Upgrade • Serial Upgrade (for recovery use)
System Security	IP-based filtering and password protection for operation and administration
Operating Environment	<ul style="list-style-type: none"> • Temperature: 0°C ~ 40°C • Humidity: 10% ~ 80% non-condensed



■ Environmental Monitoring Device

Dimensions 2.26(W) x 1.48(D) x 1.15(H) in. / 57.4(W) x 37.6(D) x 29.2(H) mm
Weight approx. 35g

Temperature Monitoring	Measures temperatures between 0°C and 80°C with an accuracy of $\pm 1^\circ\text{C}$
Humidity Monitoring	Measures relative humidity between 10% and 90% RH with an accuracy of $\pm 3\%$
LED Display	Power/Status
Digital Input	Two inputs (normally-open or closed)



■ EMD Measurement Cable

Length 78.7 in. / 2 m
Weight approx. 80g
 * Replaceable with the standard Cat.5 cable

Cable Material	Cable: UL2464 28AWG*4PAIRS+AEB Plug: 8p8c 50u * 2pcs
----------------	---

Approval	CE, FCC Class B
Warranty	Two years