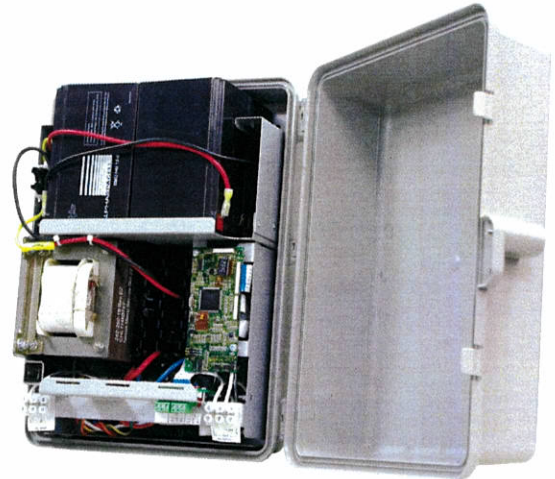


Novus Micro Secure

Indoor and Outdoor UPS



Novus Micro Secure

- Durable outdoor NEMA 3R rated plastic enclosure protects the Novus Micro Secure from severe weather
- Wide range Automatic Voltage Regulation without going to batteries protects and extends battery life, even during periods of surge or sag in voltage from utility power
- External communications via RS-232 port or (optional) SNMP Ethernet interface provides local or remote monitoring and control
- Two independently programmable relays allow tracking and controlling of key functions
- A wide operating temperature range of -40 to 74°C (-40 to 165°F)¹ is suitable for the most extreme operating environments
- Wall or pole mount for maximum flexibility for the most extreme operating environments

The Novus Micro Secure provides constant, reliable backup power for applications such as Security Cameras, Surveillance Systems, Small Key Systems, WiFi equipment and Outdoor Lighting. It comes in a NEMA 3R rated outdoor plastic enclosure for severe weather conditions. It can be wall mounted or pole mounted¹ to allow positioning close to the load. The Automatic Voltage Regulator (AVR) provides power stability in unpredictable environments and constant voltage during varied power conditions. The Novus Micro Secure is available in either North American (120VAC) or International (230VAC) variants, both with auto-frequency (60Hz/50Hz).

¹ This applies to the UPS module only. Batteries may require a heater mat at lower temperatures. Output power derates after 50°C.

² Mounting brackets sold separately.

Nominal Specifications

Power Module	Novus Micro Secure	
	North America	International
Nominal voltage:	120VAC	230VAC
Nominal frequency:	60Hz	50Hz
Input current:	2A	1A
Output current:	4.2A @ 24VAC	4.2A @ 24VAC
	0.83A @ 120VAC	0.43A @ 230VAC
Output power:	100W/VA	100W/VA
Battery string voltage:	24VDC	24VDC

General Specifications

Performance

Input voltage range	
North America (60Hz):	85 to 150VAC*
International (50Hz):	154 to 323VAC*
Output voltage range	
North America:	108 to 132VAC
International:	207 to 253VAC
Voltage waveform:	Sine wave
Typical efficiency	
(full resistive load):	>88%
Total harmonic distortion:	<3%
Typical transfer time:	3 to 5ms
Audible noise @ 1m:	<40dBA

*±3V without going to batteries

Environmental Specifications

Operating temperature:	-40 to 74°C (-40 to 165°F)*
Storage temperature:	-40 to 75°C (-40 to 168°F)
Operating altitude:	12,000ft/3658m**
Operating humidity:	Up to 95%

*This applies to the UPS module only. Batteries may require a heater mat at lower temperatures. Output power derates after 50°C.

**Derate 2°C per 1000ft (305m) above 4500 ft (1370m)

Mechanical Specifications

Dimensions	
mm:	381H x 292.1W x 152.4D
inches:	15H x 11.5W x 6D
Unit weight:	11.3kg (25lb) without batteries
	20.4kg (45lb) with 4 batteries

Standard Features

Durable outdoor NEMA 3R enclosure
 Wide range Automatic Voltage Regulation
 Communications via RS-232 port or (optional) SNMP Ethernet interface
 Pole mount bracket (optional)
 Reverse battery polarity protection
 Natural convection cooling
 Automatic voltage regulation

Agency Compliance

Electrical safety:	UL1778, CSA 22.2 No. 107.1
Marks:	CSA _{US} , CE*
EMI:	Class A FCC/CISPR, EN50091-1-2, EN60950

*CE applies to 230VAC version only

Battery Runtimes (hh:mm)*

	4 x 9Ah
100W	2:15

*Battery runtime may vary according to type of load, age of batteries, operating temperature and other related factors.

The Novus Micro Secure comes standard with 4 x 9Ah batteries.