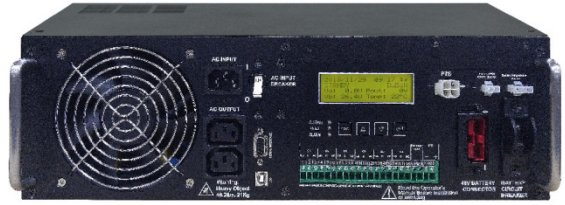


Wide Temperature Range UPS

TC



TC-650 / TC-1100



TC-2000

Main Feature

- **Satisfying TEES qualified UPS**

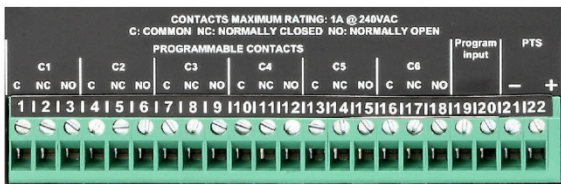
TC UPS went through several practical experiments and confirmed its industrial grade power protection. TC UPS is also compliant to Transportation Electrical Equipment Specifications (TEES) and could widely applied to outdoor equipment.

- **Wide Operating Temperature (-37°C to +74°C)**

To meet the harsh operating environment, TC UPS is specially designed to operate in the temperature from -37°C to +74°C, specialized for critical environmental requirement application.

- **Programmable Dry Contacts**

6 outputs and 1 input programmable dry contact, provided to user for better power management and accident resilience.



- **Various Communications Available**

TC provides various ways of communication

- USB B type
- RS-232
- Ethernet port (optional)

- **Generator Mode Compatibility**

Generator mode allows wider variation in input voltage and frequency while AC generator is applied.

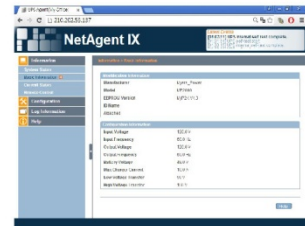
- **Accurate Message Deliver**

4-line 20 character display : High contrast monitor remains the same display sharpness while maintaing under sunshine.



- **Particular Information Monitoring**

Specially customized UPS monitoring system is applied to display specific TC information simply with web browser.



- **Flexible Communication Method**

With communication slot, UPS status and scheduled action could easily be collected from system monitoring.

- **Enhanced Power Management Ability**

Extra input ports are prepared for more reference while UPS power management.

- **Built-in AVR Function**

Fluctuating voltage, brownout and other voltage problem can be stabilized through TC in-built AVR for your best interest.

- **Inverter Mode Setting**

TC UPS is capable of running continuously in inverter mode and provide current limit protection.

Wide Temperature Range UPS

Specification

Model	TC-650	TC-1100	TC-2000
Configuration			
Capacity (VA)	650 VA	1100 VA	2000 VA
Capacity (Watts)	650 W	1100 W	2000 W
Input			
Voltage	120 VAC \pm 25% 220/230/240VAC \pm 25%		
Frequency	120VAC 60Hz 220/230/240VAC 50 / 60 Hz		
Output			
Waveform	Pure Sine Wave		
Voltage	120 VAC or 220 / 230 / 240 VAC		
Frequency	50 Hz / 60 Hz \pm 0.5 Hz		
Transfer Time	Normal Mode (Max.)	12 ms	
	Generator Mode (Max.)	25 ms	
AC Input & Output Connectors	Terminal Block , Anderson PP45 Quick connector, IEC socket		
Protection			
Full Protection	Overload, Breaker		
Management & Communication			
Communication Port	RS232 , USB B Type, SNMP card (Option)		
Physical			
Dimensions (WxDxH) (mm)	432 x 254 x 88.6 (2U)	432 x 254 x 133 (3U)	
Weight (kgs)	13	21	
Shipping Dimensions (mm)	540 x 388 x 233	540 x 388 x 277	
Shipping Weight (kgs)	14	23	
Indicators			
LCD Display	4 Line Multi-function LCD		
LED Display	Output Status, Alarm, Fault LED		
Environmental			
Operating Temperature	-37 - +74°C		
Operating Humidity	0-95 % RH (Non-condensing)		
Audible Noise	Less than 50 dB		
Battery			
String Voltage	24 VDC	48 VDC	
Type	Lead-acid Battery		
Max Charge Current	10A		

* Specifications are subject to change without further notice.

* Specifications are for reference, actual information should be based on real product.