

Automatic Transfer Switch

Product Introduction

Automatic Transfer Switch allows for maintenance of your UPS management systems while not losing power to your UPS protected equipment. Avoids costly downtime

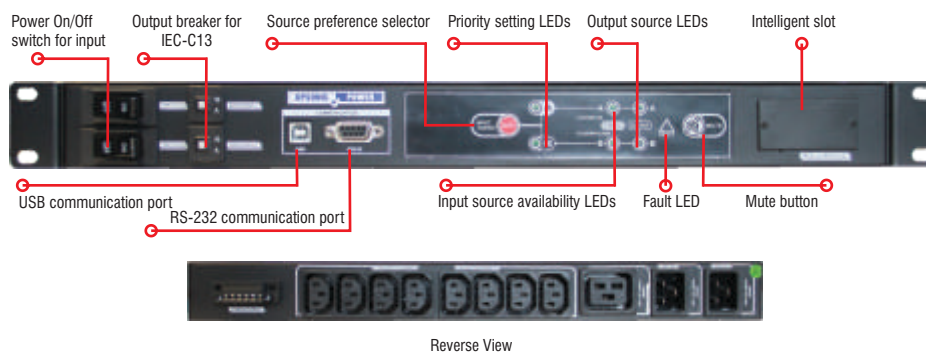
Features

- 16A max. input current
- Powered by two separately independent power sources
- Dual power supply for redundancy
- Provides seamless power switch for IT equipment
- Preferred source selection on front panel
- Highly reliability 19" rack design (1U) to fit into a diverse working environment
- Built-in USB and RS-232 communications

Specifications

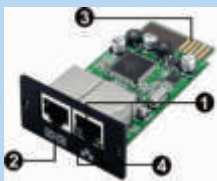
MODEL	ATS
INPUT	
Input Voltage	220/230/240 VAC
Acceptable Input Voltage	180 - 258 VAC
Input Frequency	50 Hz / 60 Hz
Maximum Input Current	16 A
OUTPUT	
Output Voltage	220/230/240 VAC
Maximum Output Current	10 A for IEC-C13 outlets 16 A for IEC-C19 outlet
CONNECTION	
Input	2 x IEC-C20 inlets
Output	8 x IEC-C13 1 x IEC-C19
Communication	USB/RS-232
Transfer time	9-12ms (Typical)
PHYSICAL	
Dimension, DxHxW (mm)	330 X 483 X 44
Net Weight (kgs)	5
ENVIRONMENT	
Operating Temperature	20-95 % RH @ -5-45°C (non-condensing)

* Product specifications are subject to change without further notice



Quick Guide for SNMP Card for ATS

1. Overview



- 1 Ethernet port (10/100Base-T)
- 2 Sensor port
- 3 Golden finger: connects to slot
- 4 Ethernet port status LEDs

Ethernet port status LEDs:		
100M LED (Green)	Flash	Port is operating at 100Mbit/s
	Off	Card is not connected to the network
10M LED (Yellow)	Flash	Port is operating at 10Mbit/s
	Off	Card is not connected to the network

2. Installation and Connection

- Step 1:** Remove the cover of intelligent slot on the panel of ATS and retain the screws
- Step 2:** Slide the card into the open slot and secure with the screws from step 1. (see chart 2-1)



Chart 2-1

- Refer to chart 2-2 for connecting the SNMP manager.
- Step 3:** Plug Ethernet cable to the Ethernet port (RJ-45) on the SNMP manager.
- Step 4:** Use one more Ethernet cable. Connect one end to the sensor port on the SNMP manager and the other end to the optional environmental monitoring device.



Chart 2-2

3. Configuration

a) Please install ATS Monitor software in your PC. After software is installed successfully, it will pop up a plug icon in the tray. SNMP manager will be automatically activated. Select "SNMP manager" by clicking right button of the mouse.

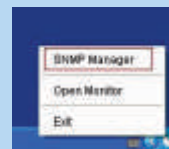


Chart 3-1

b) Enter specific IP address to search all SNMP devices in LAN. The SNMP manager will automatically collect the IP address from sever by default via a DHCP server. It will apply default IP address of 192.168.102.230, default subnet mask as 255.255.255.0, and default gateway as 0.0.0.0 without a DHCP server.

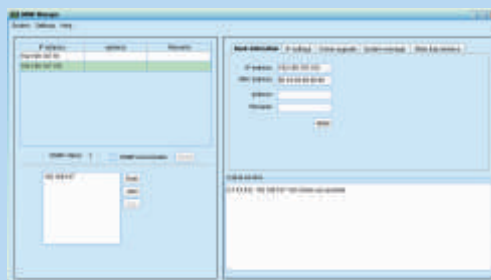


Chart 3-2

Chart 3-2

c) User can modify IP setting, online upgrade, password management, and static trap address setting in SNMP Manager interface. It is necessary to enter password for any medications. The default password is 12345678.

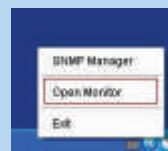


Chart 4-1

Please check SNMP Manager User Manual for detailed configuration.

4. Monitoring

As chart 4-1, select "Open Monitor" by clicking right button of the mouse. Chart 4-1

Then, it will activate ATS Monitor software and list SNMP devices on the left side of screen. Refer to Chart 4-2.

Chart 4-2

Please check ATS Monitor software for detailed operation.



Chart 4-2